

find your inner artist at



just a stones throw from Minnehaha Falls

Winter / Spring 2019 SCHEDULE

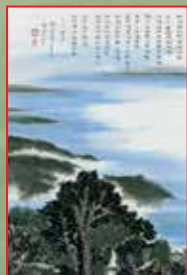
Exhibition of Bob's work winter/spring 2019

practicing the presence of place

A selection of landscapes from the brush of Bob Schmitt



January 4, 2019 – March 1, 2019



Wisdom Ways Center for Spirituality
Carondelet Center

1890 Randolph Avenue , St. Paul, MN

Opening reception & conversation with the artist
Friday, January 25, 7:00 – 8:00 pm

Closing reflections with poetry reading by the artist
Wednesday, February 27, 7:00 – 8:00 pm

learn more at/rsvp: wisdomwayscenter.org



see more of Bob's work at: laughingwatersstudio.com



**One-day
intensive workshops
in March with
Hong Zhang**

Painting Chrysanthemum

Wednesday, March 27, 2019 10-3:00 pm

or

Thursday, March 28, 2019 10-3:00 pm

Fee: \$120 (includes material fee)
Specialty brushes will be available
for purchase

Some previous brush
experience helpful.

Join Bob's teacher Hong Zhang
for a one-day Introduction
to Chrysanthemum.

Class will be at
Laughing Waters Studio.

**Register today.
These fill quickly.**



the practice of Chinese calligraphy & painting

Winter 2019

Weekly classes

JANUARY

Tuesday	Wednesday	Thursday	Friday	Saturday
8 A. Chinese ptg	9 B. Chinese ptg	10 C. Chinese ptg	11 D. Chinese ptg	
15 A. Chinese ptg	16 B. Chinese ptg	17 C. Chinese ptg	18 D. Chinese ptg	
22 A. Chinese ptg	23 B. Chinese ptg	24 C. Chinese ptg	25 D. Chinese ptg	

FEBRUARY

29 no class	30 Bob will be teaching in Key West for info: tskw.org			
5 no class	6 . Chinese ptg	8 C. Chinese ptgg	9 D. Chinese ptg	
12 A. Chinese ptg	13 B. Chinese ptg	14 C. Chinese ptg	15 D. Chinese ptg	
19 A. Chinese ptg	20 B. Chinese ptg	21 C. Chinese ptg	22 D. Chinese ptg	

MARCH

26 A. Chinese ptg	27 B. Chinese ptg	28 C. Chinese ptgg	1 D. Chinese ptg	
5 A. Chinese ptg	6 B. Chinese ptg	7 C. Chinese ptg	8 D. Chinese ptg	
12 A. Chinese ptg	13 B. Chinese ptg	14 C. Chinese ptg	15 D. Chinese ptg	
19 A. Chinese ptg	20 B. Chinese ptg	21 C. Chinese ptg	22 D. Chinese ptg	
26 A. Chinese ptg	27 L. One-day Intensive	28 M. One-day Intensive	29	

Previous experience not required. Beginners welcome.

Some classes are filled by continuing students. Call to inquire which classes still have openings.

For information, call: 612 333-1881

Each class includes instructor demonstration, discussion, and exercises. Generally students spend first hour working with models of Chinese calligraphy. The second hour is spent working with landscapes or other painting. (Class size limited to 10 students)

Previous experience not required. Beginners welcome.

Winter \$300 (10 weeks)

- A.** Tues 10:00-noon
- B.** Wed 10:00-noon
- C.** Thurs 10:00-noon
- D.** Fri 10:00-noon



Art Supplies

For Chinese painting classes, all supplies can be purchased at first class or as needed.

A \$80 basic painting kit that includes painting felt, brush, ink stick, ink stone, wash bowl and a roll of xuan paper is available.

Studio policy for make up classes

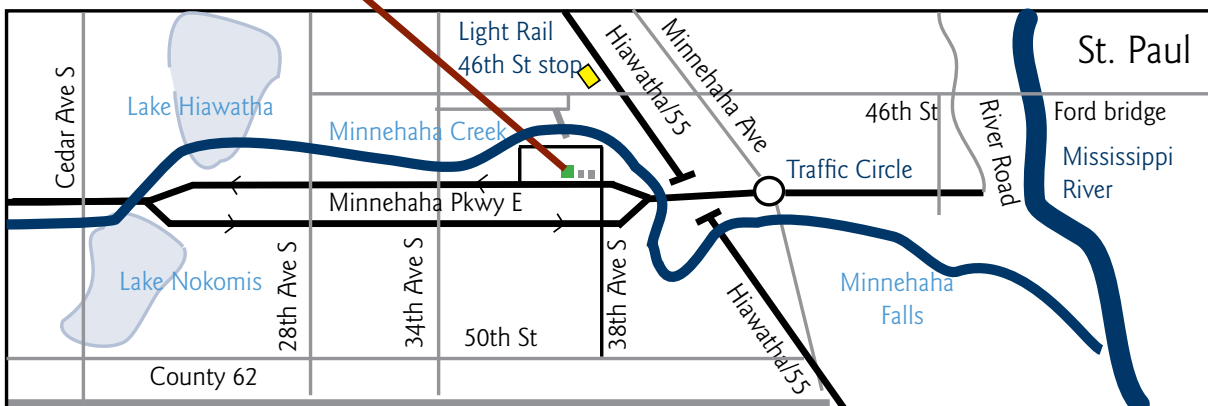
If you need to miss a class, you can arrange to make it up on another day. Please call ahead to be sure there is space.

In the event that a class needs to be cancelled or re-scheduled, class fee will be credited to the next term.

All classes are held at Laughing Waters Studio unless specified otherwise

3718 Minnehaha Parkway East, Minneapolis, MN 55406

(one block from Minnehaha Falls in south Minneapolis—three short blocks from 46th Street Station—Hiawatha Line)



SPRING 2019

Weekly classes

APRIL

Tuesday	Wednesday	Thursday	Friday	Saturday
9 A. Chinese ptg	10 B. Chinese ptg	11 C. Chinese ptg	12 D. Chinese ptg	
16 A. Chinese ptg	17 B. Chinese ptg	18 C. Chinese ptg	19 D. Chinese ptg	
23 A. Chinese ptg	24 B. Chinese ptg	25 C. Chinese ptg	26 D. Chinese ptg	

MAY

30 A. Chinese ptg	1 B. Chinese ptg	2 C. Chinese ptg	3 D. Chinese ptg	
7 A. Chinese ptg	8 B. Chinese ptg	9 D. Chinese ptg	10 D. Chinese ptg	
14 A. Chinese ptg	15 B. Chinese ptg	16 C. Chinese ptg	17 D. Chinese ptg	
21 no class	22 no class	23 no class	24 no class	
28 A. Chinese ptg	29 B. Chinese ptg	30 C. Chinese ptg	31 D. Chinese ptg	

JUNE

4 A. Chinese ptg	5 B. Chinese ptg	6 C. Chinese ptg	7 D. Chinese ptg	
11 A. Chinese ptg	12 B. Chinese ptg	13 C. Chinese ptg	14 D. Chinese ptg	
18 A. Chinese ptg	19 B. Chinese ptg	20 C. Chinese ptg	21 D. Chinese ptg	

Previous experience not required. Beginners welcome.



Each class includes instructor demonstration, discussion, and exercises. Generally students spend first hour working with models of Chinese calligraphy. The second hour is spent working with landscapes or other painting. (Class size limited to 10 students)

Spring \$300 (10 weeks)

A. Tues 10:00-noon

B. Wed 10:00-noon

C. Thurs 10:00-noon

D. Fri 10:00-noon

MARK YOUR CALENDARS

One-day intensive workshops in August

Tuesday, August 13, 2019 10-3:00 pm

Strengthening brush painting skills Intensive

Fee: \$100 (includes material fee)



Thursday, August 15, 2019 10-3:00 pm

One-stroke/splash painting Intensive

Fee: \$100 (includes material fee)



Instructor:

Bob Schmitt

For over 50 years, Bob has been using ink and brush in the manner of Asian brush painters. Bob is a former Early Childhood/Family Education instructor and a trained Montessori teacher. He has trained professionally since 1998 in the study and practice of traditional Chinese landscape painting and calligraphy with Hong Zhang, a Chinese painting master from Shanghai who resides in Minneapolis. He also has studied with Chinese painting masters, Lok Tok and Yitong Lok of Toronto, Canada since 1995. Bob offers instruction with the endorsement of these three painters.

See Bob's work at:

www.laughingwatersstudio.com

Art for the Non-Artist

Still suffering from the "I'm no good at art" syndrome. Maybe it's time to recover! Reclaim your creative expression! Gentle, fun atmosphere with easy exploration of drawing in pencil, pastels, charcoal and watercolor. No talent is required.

Fall \$300 (10 weeks)

Winter \$300 (10 weeks)

Concurrent with any painting class.



Group lessons / events



Create your own workshop with Bob!
Single session or multiple sessions.

For more information:

612-333-1881

Visit the gallery & shop

Find paintings, scrolls, prints,
cards and lanterns
in the shop at
Laughing Waters Studio

**open for LoLa art crawl (3rd wknd Sept)
& Thanksgiving weekend (F/Sa/Su) and
by appointment: 612-333-1881**



Registration form

For more information, call: 612 333-1881

Participant's name (age, if child)

(If child, parent's name(s))

Address

City/State/ZIP

Phone

Email

Class title

Starting date

Amount enclosed

Revised 11.22.2018 Class schedule is subject to change. Current schedule: www.laughingwatersstudio.com



To register:

Complete form and send with a check
(payable to Laughing Waters Studio)
for one-half of class fee.
Final payment required at first class.

Mail to:

Laughing Waters Studio
3718 Minnehaha Parkway East
Minneapolis, MN 55406